



SAFER DRIVING

Handling equipment is a lever improving working conditions when used properly. The Manitou Group wishes, through its REDUCE Risks program will inform you and you raise awareness of good practices for the safe use of your equipment.



Check your equipment before use



Only authorized persons may use the equipment



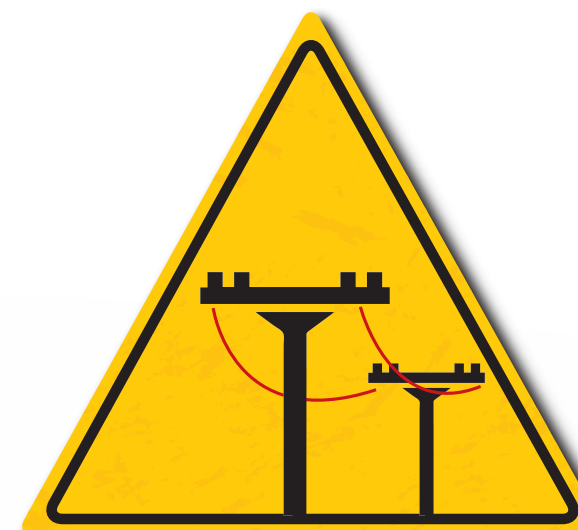
Adjust your PPE to suit your activity (helmets, glasses ...)



Be aware of your work environment to prevent damage



Respect the number of authorized persons in basket



Keep a safe distance when approaching high-voltage lines



Define your work area with cones, barriers ...



Never place your arms, legs ... outside the basket



Adapt your driving mode to your environment



Never walk under a raised load



Never use the platform like a crane



Respect the maximum capacity indicated on the load chart



Be attentive ground conditions, when deploying stabilizers



Make sure that the wind speed does not exceed 45 km/h



Pay attention to the position and the extension boom on the public highway



Be aware of load Gradeability



When parking respect safety rules



Always use a safety harness



Be aware of objects, fabrics ... which can get caught in the machine



Never cut protection and safety systems



Never make unauthorized modifications to on your machine



Periodic maintenance must comply with legal requirements



Be aware of the legal safety requirements and comply



Read the instructions in the operator's manual



Be careful when refueling

MANITOU
GROUP