

Working safely

Manitou is committed to designing machines that provide optimum safety for users.

- **Optimal visibility**
Thanks to the design of the cab and the blind spots corrected by the mirrors.
 - **Parking brake**
Automatic with hill start assist to prevent accidents.
 - **Joystick with driver presence detection**
To avoid unwanted movements and ensure greater safety on site.
 - **Intuitive and intelligent dashboard**
All controls are within easy reach, identified with pictograms and colour codes. The operator is alerted to its maintenance, use and safety by means of notifications.
- **Ergonomic access to the driving position**
Step-free and easy to reach, reducing operator fatigue and the risk of falls.
 - **Tilt lock**
To secure your handling.

BUILT TO LAST:

- high quality components
- excellent machine finish
- robust and proven boom and chassis design



Simplified user guide
How-to videos
Reduce Risks supports you
in the safe use of your machines



“
«Lifting power,
manoeuvrability, accessi-
bility, you really feel safe in
this machine».

Your dealer



Scan and find out
more information
on **manitou.com**



This publication describes the versions and configuration possibilities of Manitou products which may differ in equipment. The equipment shown in this brochure may be standard, optional or not available depending on the version. Manitou reserves the right to change the specifications described and shown at any time without notice. The specifications shown are not binding on the manufacturer. For more details, contact your Manitou dealer. Non contractual document. Presentation and visuals of products are not contractual. The logos and visual identity of the company are the property of Manitou and may not be used without permission. All rights reserved. The photos and diagrams contained in this brochure are provided for reference purposes only. Manitou BF
SA - Public limited company with a Board of Directors - Share capital: 39,547,824 euros - 857 802 508 RCS Nantes
Manitou ©Adobe stock

Ultra compact
**MT
625**



Scan and find out
more information
on **manitou.com**



Easy to use and maintain

JSM

Switch and Move Joystick: This ergonomically designed joystick is ideal for improving your productivity and performance.



- **Heavy-duty bonnet**
2-piece engine cover for easy daily maintenance. Shock and impact resistant Telene structure. Its compactness allows optimal side and rear visibility for greater safety on the worksite.
- **Quick start**
Easy to use, this machine offers a quick start-up in 2 seconds.
- **Robustness**
Rear lights integrated into the counterweight. Boom cylinder and hose protection.
- **Access to maintenance**
Maintenance information on the dashboard will assist the operator throughout the life cycle of the machine. The large opening of the engine cover on the right side of the machine allows easy access to the various components.

A unique machine combining compactness, performance and robustness

The MT 625 offers you all the advantages of a loader, telehandler and industrial truck in one machine.



Turning
radius
3.31 m

Operates in the tightest of spaces: material parks, urban or congested construction sites, garage doors, underground car parks, etc.







Optimised dimensions: less than 2m in height and width, and 3.4m for the turning radius.

Ideally suited for construction and urban renovation, the MT 625 is ideal for masonry, carpentry, landscaping, etc.



Performance and versatility
at the service of your daily life

Manitou telescopic handlers are true tool carriers thanks to a wide choice of compatible accessories.

Essential bucket	Big Bag Handler	Hook Stem
This bucket, dedicated to all construction applications, to move bulk material with a maximum density of 2100kg/m3	Total capacity 2400 kg, 4 places of 600 kg each. Welded stops, limit the risk of falling bags.	Wide range from 4000 kg to 6000 kg. Direct mounting on the machine table. Safety: approved and self-locking swivel hook.
		
Floating fork apron	Sweeper	Carrying basket 365kg*
The essential attachment for handling palletised loads. The forks can be folded for easy transport.	Floating frame prevents the attachment from being crushed when driving on an uneven surface. 230mm polyester side brush in galvanised steel.	Fixed basket with a capacity of 200 or 365 kg approved for 2 or 3 people. Only compatible with the access versions.
		

OPTIMIZED ACCESSORIES Better visibility, performance and lightness to reduce TCO	ELEVATION OF PEOPLE The MT 625 HA can be equipped with two types of platforms (200 kg compact or 365 kg wide)	HYDRAULIC LOCK The optional hydraulic lock allows a non-hydraulic attachment to be changed and secured without leaving the machine.
--	---	---

6^m Working height

2.5^t Max. Capacity

3.40^m Max. Outreach

3 Direction modes



Flexibility and security
The slowing down of the hydraulic movements at the end of the stroke makes it possible to optimise and secure the operations

Hydraulic movements
to gain in productivity

Turning radius
3,31 m



Spacious cabin for more comfort

Dashboard simple and intuitive

Simplified use sheets
Available in every machine

Heavy-duty, reinforced
Telene bonnet

Hydrostatic transmission
The hydrostatic transmission offers smooth and progressive control to position a load with greater precision and safety. This system allows you to tailor the performance of your machine.

Ground clearance
33 cm
High off-road performance

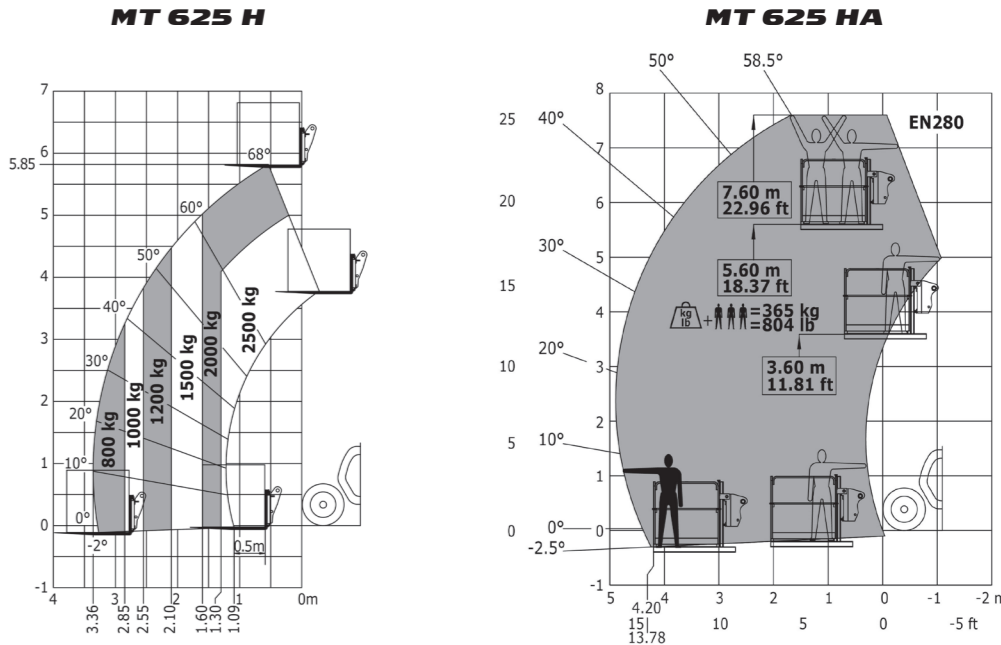


Why go compact?

Compact, powerful and easy-to-use machines for your work! The MT Compact range offers an excellent working envelope. It can be used in confined spaces.

Thanks to the many compatible attachments, this telescopic forklift offers a versatility unique on the market. Suitable for off-road use, this machine has exceptional load charts. These machines will be your best assets on your construction sites! The perfect combination of profitability, safety and reduced TCO!

	MT 625 H	MT 625 HA
Max. capacity (kg)	2500	2500
Max. offset (m)	3.40	3.40
Max. lifting height (m)	5.85	5.85
Engine standard	STAGE V	STAGE V
Power (hp / kW)	75 ch / 55.4 kW	75 ch / 55.4 kW
Engine brand	KUBOTA	KUBOTA
Max. travel speed (km/h)	24,9	24,9
Transmission	Hydrostatic	Hydrostatic
Empty weight (with forks) (kg)	4800	4800
Overall width (m)	1.81	1.81
Overall height (m)	1.92	1.92
Length at deck (m)	3.83	3.83
Ground clearance (m)	0.33	0.33
External turning radius (m)	3.31	3.31



A tailor-made solution adapted to your needs
Discover a wide range of options available to you, ask your Manitou contact for advice.

 Compact beacon Further optimise the compactness the compactness of your machine	 Centralized lubrication Time-saving maintenance with even easier access	 35 Km/h version Boost your performance and your journeys on the road
--	--	---

2 possible finishes
Manitou offers two levels of finish to meet all your needs.

Standard

Comfort

*only on access version