



SAFER DRIVING

Handling equipment is a lever improving working conditions when used properly. The Manitou Group wishes, through its REDUCE Risks program will inform you and you raise awareness of good practices for the safe use of your equipment.



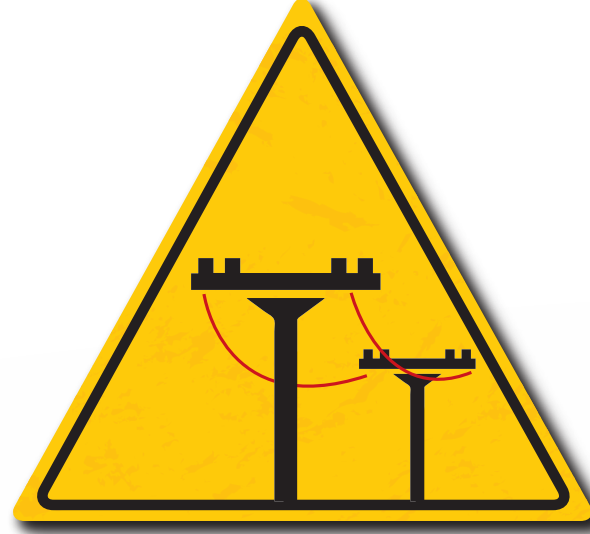
Check your equipment before use



Only authorized persons may use the equipment



Wearing safety shoes is mandatory



Keep a safe distance when approaching high-voltage lines



Be prepared to react to any unexpected situation



The elevation of persons is only permitted with suitable and certified platforms



No passengers



Adapt your tyres according to the type of ground



Always check the capacity of the loading area



Never leave the engine running without driver



Don't leave the equipment static with a raised load



Respect the maximum capacity indicated on the load chart



Carry the load in low position and the boom Retracted



Never walk under a raised load



Use appropriate accessories according to the load requirement



Be aware of load Gradeability



Make sure that the wind speed does not exceed 27mph



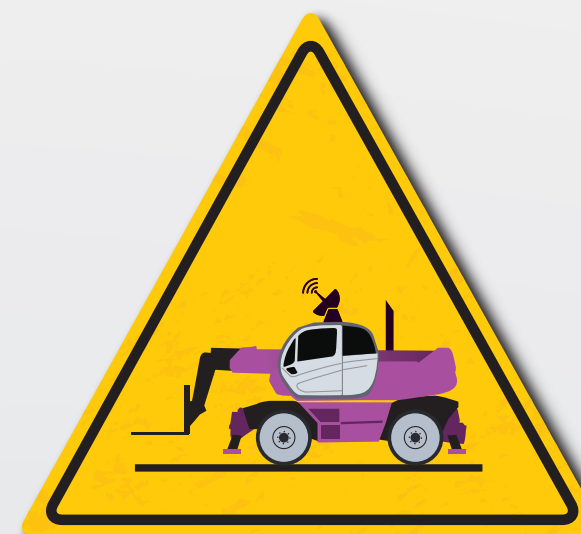
Be attentive to the ground conditions when deploying stabilizers



When parking respect safety rules



Be aware of objects, fabrics ... which can get caught in the machine.



Never make unauthorized modifications to your equipment



Periodic maintenance must comply with legal requirements



Be aware of the legal safety requirements and comply



Read the instructions in the operator's manual



Be careful when refueling

MANITOU
GROUP