

MXT 840

STRONG ENOUGH TO
HANDLE ANYTHING



 **HARAT**
BUILT
FOR THE WORLD

| | |
|------------------------------|---------|
| Engine Power | 74.5 hp |
| Max. Capacity | 4000 kg |
| Max. Lift Height | 7.60 m |
| Max. Outreach | 4.23 m |
| Powered by BSV Engine | |



MANITOU MXT- RAISING THE BAR EVERYDAY

The new diesel tank capacity of 100L reduces the fuel top-up frequency

With a roof wiper motor option, there will be better visibility at full height

The toolbox option will provide an extra space to store tools

A LEGACY OF 66 YEARS

From the invention of the first all-terrain forklift truck to designing, manufacturing, distributing, and servicing different equipment for construction, agriculture, and industry sectors, we have been there to handle it all.

Today, our product range includes fixed all-terrain telescopic forklifts, compact wheeled and tracked skid-steers, backhoe loaders, scissor lifts, and different accessories. With **1050 dealers** in **140 countries**, we continued evolving and innovating to offer the best solution for our customers.

MAXIMUM IMPRESSIVE
LIFT HEIGHT OF
8M
AND LOADING
CAPACITY OF **4000KG**

H A R A T
BUILT
FOR THE WORLD

Continuing our legacy of delivering world-class quality and innovation, Manitou brings the best of Indian engineering to drive global innovation and shape the future. With fuel efficiency, smart technology, and eco-friendly solutions, our BSV Engine machines are ready to take on the world, redefining what Manitou machines can achieve.



HOW DO MANITOU TELEHANDLERS MAKE A DIFFERENCE?

Performance

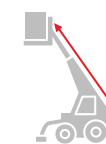
Works well in all conditions, the Manitou Telehandler is an all-terrain machine that can work on a **47% slope gradient**. With a **turning radius of 3.9m**, **4 steering wheels** with **3 steering modes** improve performance & save time.



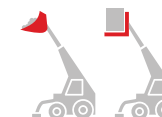
• Load and Unload with speed and precision



• Go Beyond Limits with **7.6m lift height** and **4.23m working outreach**



• Ready for Every Task with assortments like jibs, cranes, and winches



• Built to Handle More up to **4 tonnes** with absolute confidence



Strength

The cab interiors and mudguards are crafted from durable materials, ensuring exceptional robustness and longevity for the machine. Built to Level II ROPS/FOPS standards, the cab guarantees superior safety. The axles are equipped with **oil-bathed multi-disc brakes** for reliable performance, while other components are sourced from trusted, renowned suppliers, ensuring easy availability and quality assurance.

Productivity

Enhance your productivity with a versatile range of attachments designed to perform efficiently in diverse conditions. The four-speed gearbox lets you optimize speed for maximum output, while the **Easy Manager** app brings convenience to your fingertips. **Monitor live machine data** and streamline your operations effortlessly, all from your phone.

Safety

The machine can load up to 2.5 tonnes at 17.4 m height very safely with the support of **stabilizers** on the tyres. Many features like the reversible fan to blow out debris from the radiator, **spark arrestor** to avoid discharge of combustible particles, and **fire extinguisher**, will keep you and the machine both safe in tough environments.



Access real-time information

Get geofence alerts

Monitor your machine data

Track the machine location

CAPACITIES

| | |
|---------------------|---------|
| Max. capacity | 4000 kg |
| Max. lifting height | 7.60 m |
| Max. outreach | 4.23 m |

WEIGHT AND DIMENSIONS

| | |
|---|--------------------------------|
| Length to face of forks (l2) | 4.67 m |
| Overall width (b1) | 2.38 m |
| Overall height (h17) | 2.59 m |
| Wheelbase (y) | 2.58 m |
| Ground clearance (m4) | 0.37 m |
| Overall cab width (b4) | 0.85m |
| Tilt-up angle (a4) | 12 ° |
| Tilt-down angle (a5) | 134 ° |
| External turning radius (over tyres) (Wa1) | 3.90 m |
| Unladen weight (with forks) | 8525 kg |
| Unladen weight | 8145 kg |
| Tires type | Inflatable |
| Standard tires | BKT 16.0/70-20 14PR- EM936 SPL |
| Forks length / width / section (l / e / s) | 1200 mm x 125 mm x 50 mm |

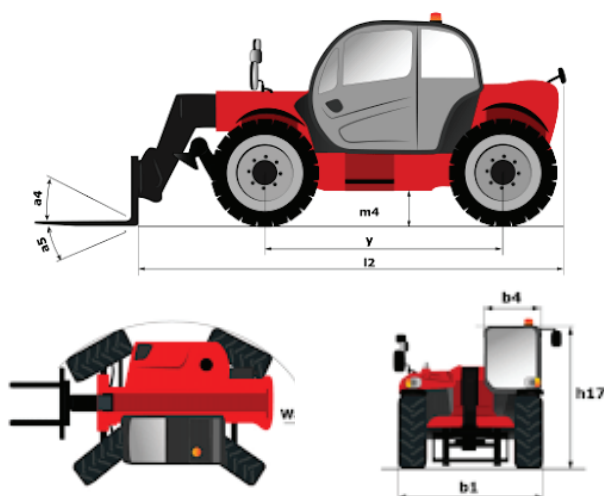
PERFORMANCES

| | |
|------------|------|
| Lifting | 13 s |
| Lowering | 9 s |
| Extension | 9 s |
| Retraction | 5 s |
| Scoop | 5 s |
| Dump | 4 s |

ENGINE

| | |
|---|--------------------------|
| Engine brand | Kirloskar |
| Engine norm | BS-V |
| Engine model | 4R1190THT BSV |
| Number of cylinders / Capacity of cylinders | 4 - 4760 cm ³ |
| I.C. Engine power rating - Power | 74.50 Hp / 54.80 KW |
| Max. torque / Engine rotation | 400 Nm @ 1200 rpm |
| Drawbar pull (Laden) | 8300 daN |

MXT 840 K BSV - DIMENSIONAL DRAWING



TRANSMISSION

| | |
|--|---|
| Transmission type | Torque converter with manual transmission |
| Number of gears (forward / reverse) | 4 / 4 |
| Max. travel speed | 26 km/h |
| Max. travel speed (may vary according to applicable regulations) | 26 km/h |
| Parking brake | Manual |
| Service brake | Oil-immersed multi-discs braking on front & rear axles |

HYDRAULICS

| | |
|---------------------------|-------------------------------|
| Hydraulic pump type | Gear type with 2 section body |
| Hydraulic flow / Pressure | 91.40 l/min-250 bar |

TANK CAPACITIES

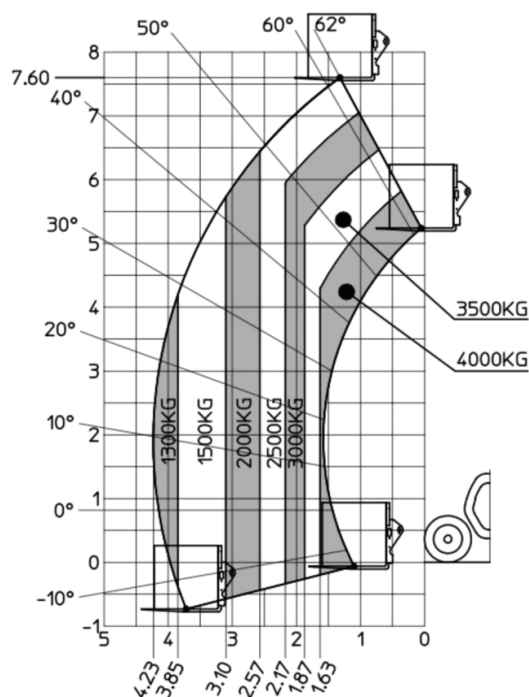
| | |
|---------------|--------|
| Engine oil | 9.50 l |
| Hydraulic oil | 120 l |
| Fuel tank | 100 l |

NOISE AND VIBRATION

| | |
|---------------------------------|-------------------------|
| Noise at driving position (LpA) | 85 dB |
| Noise to environment (LwA) | 110 dB |
| Vibration on hands/arms | < 2.50 m/s ² |

MISCELLANEOUS

| | |
|----------------------------------|--|
| Steering wheels (front / rear) | 2 / 2 |
| Drive wheels (front / rear) | 2 / 2 |
| Safety / Safety cab homologation | Standard EN 15000 / Cabin ROPS - FOPS level 2 |
| Controls | Monolever |



1st Floor, Plot No. A-10, Block-B1, Main Mathura Road,
Mohan Cooperative, New Delhi-110044
Email: info.mind@manitou-group.com, Web: www.manitou.com

Call Toll-Free 1800 103 7600 For Raising Your All Queries

Follow us for new updates



MANITOU
HANDLING YOUR WORLD