

Ultra compact
MT
625



Scan and find out
more information
on manitou.com

 **MANITOU**
HANDLING YOUR WORLD

Working safely

Manitou is committed to design machines that provide optimum safety for users.

- **Optimal visibility**

Thanks to the design of the cab and the blind spots corrected by the mirrors.

- **Parking brake**

Automatic with hill start assist to prevent accidents.

- **Joystick with driver presence detection**

To avoid unwanted movements and ensure greater safety on site.

- **Intuitive and intelligent dashboard**

All controls are within easy reach, identified with pictograms and colour codes. The operator is alerted to its maintenance, use and safety by means of notifications.

- **Ergonomic access to the driving position**

Step-free and easy to reach, reducing operator fatigue and the risk of falls.

- **Tilt lock**

To secure your handling.

BUILT TO LAST:

- high quality components
- excellent machine finish
- robust and proven boom and chassis design



Simplified user guide

How-to videos

Reduce Risks supports you in the safe use of your machines



All our telescopic handlers are connected

Connected solution

Your telescopic handler has something extra: thanks to connectivity, you can monitor its activity in real time and optimise operational follow-up.

- **Optimise your operations**

Follow your equipment in real time, anticipate your maintenance, save time. Take advantage of a multitude of indicators to help you reduce downtime and make the right decisions.

- **Protect your equipment and your operators**

Manage driving authorizations and control access to ensure operator and workplace safety.

- **Work with peace of mind and make your project a reality**

Keep your budget under control with a tailored warranty extension. You can also benefit from a tailor-made financing solution.

Protect your equipment and control access

As an option, you can manage driving authorizations and control operator access to your machines to ensure their safety and that of the workplace.



Easy to use and maintain

JSM

Switch and Move Joystick: This ergonomically designed joystick is ideal for improving your productivity and performance.



- **Heavy-duty bonnet**
2-piece engine cover for easy daily maintenance. Shock and impact resistant Telene structure. Its compactness allows optimal side and rear visibility for greater safety on the worksite.
- **Quick start**
Easy to use, this machine offers a quick start-up in 2 seconds.
- **Robustness**
Rear lights integrated into the counterweight. Boom cylinder and hose protection.
- **Access to maintenance**
Maintenance information on the dashboard will assist the operator throughout the life cycle of the machine. The large opening of the engine cover on the right side of the machine allows easy access to the various components.

A unique machine combining compactness, performance and robustness

The MT 625 offers you all the advantages of a loader, telehandler and industrial truck in one machine.



Operates in the tightest spaces: material parks, urban or congested construction sites, garage doors, underground car parks, etc.

Optimised dimensions: less than 2m in height and width, and 3.4m for the turning radius.

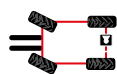
Ideally suited for construction and urban renovation, the MT 625 is ideal for masonry, carpentry, landscaping, etc.

6_m Working height

2.5_t Max. Capacity

3.40_m Max. Outreach

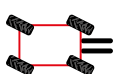
3 Steering modes



2 WHEEL STEER



4 WHEEL STEER

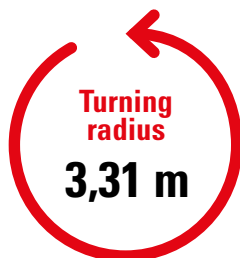


CRAB MODE

Flexibility and security

The slowing down of the hydraulic movements at the end of the stroke optimize and secure the operations

Hydraulic movements to gain in productivity



Turning radius
3,31 m



Optimal dimensions
for easy and safe transport

SLINGING/STOWING

Stowing and slinging points at the front and rear of the machine.



Spacious cabin for more comfort



Dashboard simple and intuitive

Simplified use sheets
Available in every machine



Heavy-duty, reinforced Telene bonnet

Hydrostatic transmission offers smooth and progressive control to position a load with greater precision and safety. This system allows you to tailor the performance of your machine.

Ground clearance 33 cm
High off-road performance

Why go compact?

Compact, powerful and easy-to-use machines for your work! The MT Compact range offers an excellent working envelope. It can be used in confined spaces.

Thanks to the many compatible attachments, this telehandler offers a versatility unique on the market. Suitable for off-road use, this machine has exceptional load charts. These machines will be your best assets on your construction sites! The perfect combination of profitability, safety and reduced TCO!





Performance and versatility at the service of your daily life

Manitou telescopic handlers are true tool carriers thanks to a wide choice of compatible attachments.

Essential bucket

This bucket, dedicated to all construction applications, to move bulk material with a maximum density of 2100kg/m³



Big Bag Handler

Total capacity 2400 kg, 4 places of 600 kg each. Welded stops, limit the risk of falling bags.



Hook Stem

Wide range from 4000 kg to 6000 kg. Direct mounting on the machine table. Safety: approved and self-locking swivel hook.



Floating fork apron

The essential attachment for handling palletised loads. The forks can be folded for easy transport.



Sweeper

Floating frame prevents the attachment from being crushed when driving on an uneven surface. 230mm polyester side brush in galvanised steel.



Carrying basket 365kg*

Fixed basket with a capacity of 200 or 365 kg approved for 2 or 3 people. Only compatible with the access versions.



OPTIMIZED ATTACHMENTS

Better visibility, performance and lightness to reduce TCO

ELEVATION OF PEOPLE

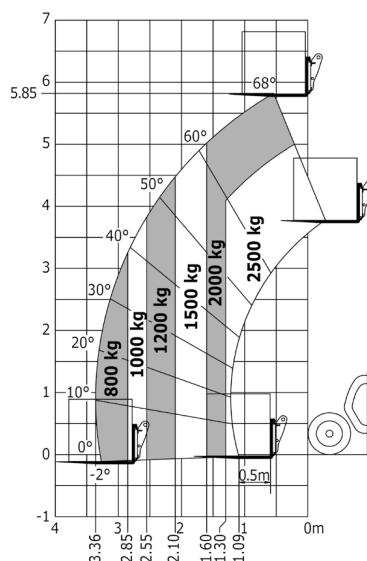
The MT 625 HA can be equipped with two types of platforms (200 kg compact or 365 kg wide)

HYDRAULIC LOCK

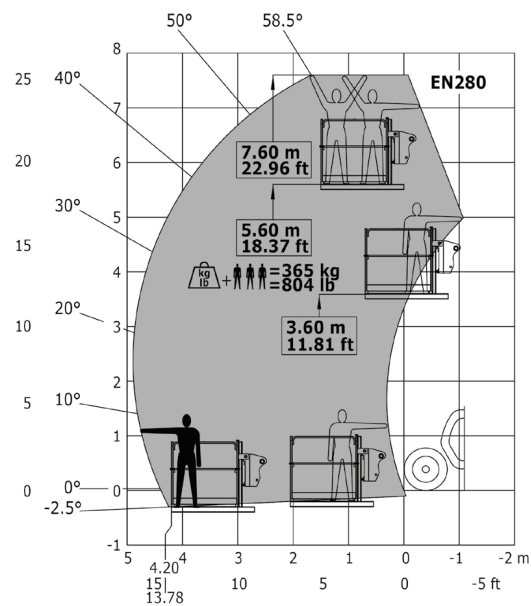
The optional hydraulic lock allows a non-hydraulic attachment to be changed and secured without leaving the machine.

	MT 625 H	MT 625 HA
Max. capacity (kg)	2500	2500
Max. outreach (m)	3,40	3,40
Max. lifting height (m)	5.85	5.85
Engine norm	STAGE V	STAGE V
Power (hp / kW)	75 ch / 55.4 kW	75 ch / 55.4 kW
Engine brand	KUBOTA	KUBOTA
Max. travel speed (km/h)	24,9	24,9
Transmission type	Hydrostatic	Hydrostatic
Unladen weight (with forks) (kg)	4800	4800
Overall width (m)	1.81	1.81
Overall height (m)	1.92	1.92
Overall length to carriage (m)	3.83	3.83
Ground clearance (m)	0.33	0.33
External turning radius (m)	3.31	3.31

MT 625 H



MT 625 HA



A tailor-made solution adapted to your needs

Discover a wide range of options available to you, ask your Manitou contact for advice.



Compact beacon

Further optimize the compactness of your machine



Centralized lubrication

Time-saving maintenance with even easier access



35 km/h version

Boost your performance and your journeys on the road

2 possible finishes

Manitou offers two levels of finish to meet all your needs.

Standard

Comfort



“

«Lifting power, manoeuvrability, accessibility, you really feel safe in this machine».

Your dealer



Scan and find out
more information
on **manitou.com**



This publication describes the versions and configuration possibilities of Manitou products which may differ in equipment. The equipment shown in this brochure may be standard, optional or not available depending on the version. Manitou reserves the right to change the specifications described and shown at any time without notice. The specifications shown are not binding on the manufacturer. For more details, contact your Manitou dealer. Non contractual document. Presentation and visuals of products are not contractual. The logos and visual identity of the company are the property of Manitou and may not be used without permission. All rights reserved. The photos and diagrams contained in this brochure are provided for reference purposes only. Manitou BF

SA - Public limited company with a Board of Directors - Share capital: 39,547,824 euros - 857 802 508 RCS Nantes
Manitou ©Adobe stock