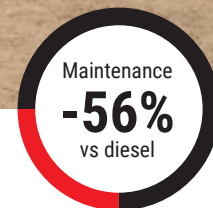


100% electric
MT
625_e



Scan to find more
information on
manitou.com

 **MANITOU**
HANDLING YOUR WORLD



Significantly reduce your operating costs







Manitou is committed to reducing your total cost of ownership: minimal daily checks, reduced maintenance and low energy costs!

- Robustness**
 Heavy-duty Telene hood, cylinders and hoses protected by the boom, batteries protected inside the chassis.
- Fewer hours on the meter!**
 Electric machines require between 20% and 30% fewer working hours than diesel versions (since idling time is virtually non-existent).
- LED lighting**
 A low-cost, high-performance system with a longer lifespan.
- Regeneration**
 Energy regeneration system when the accelerator pedal is released, for lower consumption and greater range.
- Maintenance**
 Machine designed for quick, easy access to components and lubrication points.



Versatility for your everyday tasks

Manitou telehandlers are real tool carriers, to which you can easily connect the Manitou-approved attachment specifically suited to your application.

Fork positioner carriage	Rehandling bucket	Material basket
<p>The essential, sturdy attachment for handling palletized loads. The forks fold back for easy transport and road use.</p> 	<p>This bucket is dedicated to all construction and public works applications for moving loose materials with a maximum density of 2,100 kg/m³.</p> 	<p>Efficient, low-cost solution for moving materials safely in all types of applications, environments and weather conditions.</p> 
Hook crane	Sweeper	Big bag handler
<p>A simple, safe attachment for handling suspended loads. Short and light, it retains the maximum capacity of the truck.</p> 	<p>High-performance cleaning solution for non-intensive applications. Available with optional 120-liter water sprayer.</p> 	<p>Total capacity of 2,400 kg, 4 bays of 600 kg each. Welded stops limit the risk of falling bags.</p> 

5,85_m Lift height

2,5_t Max. capacity

3,40_m Max. offset

Turning radius
3,31_m



100%
electric



Zero
emissions



Low noise
level

Electricity for ultra-compact

Built-in charger

3kW or 9kW for standard or fast charging

Battery
anti-crush
sensor

Visibility
Exceptional on
attachments
and load

Telene hood ultra-resistant
to shocks
and vibrations

**Cumulated hydraulic
movements**
For maximum efficiency

Why choose Lithium-ion?

The MT 625e is equipped with a lithium-ion battery. This technology offers many advantages:

- Low maintenance requirements
- Boost charge (partial and frequent recharging of the battery)
- Climate resistance
- Useful capacity and service life among the best on the market

Battery pack

Integrated into the chassis
for optimum protection

Ground clearance

33 cm

High off-road
performance

JSM ergonomique

Pour un confort maximal

25%

autonomy
on 1-hour charge

ZERO COMPROMISE on performance

Autonomy and charging time

- Autonomy up to a day's work!
- Machine can be connected up to 400V.
- Overnight charging time, as fast as four hours with the 9kW rapid charger.

Take the leap into electric

Low emissions and uncompromised
performance.

The MT 625e is ideal for indoor applications, night-time work, historic sites or urban environments; wherever acoustic comfort and low CO₂, NoX and particulate emissions are essential.



Discover the machine
in videos



Ease of use

Quick, intuitive handling:

- Manitou DNA preserved
- Intuitive, easy-to-use Harmony control panel
- A single speed
- Automatic parking brake and hill-start assist
- Easily identifiable color pictograms
- Start-up in less than 2 seconds!

Setting up for a charge takes just a few seconds.
A dedicated, secure storage space for the charging cable is located at the rear of the machine near the socket.



Safeguarding operators and their environment

Manitou is committed to designing machines that ensure optimal safety for users.

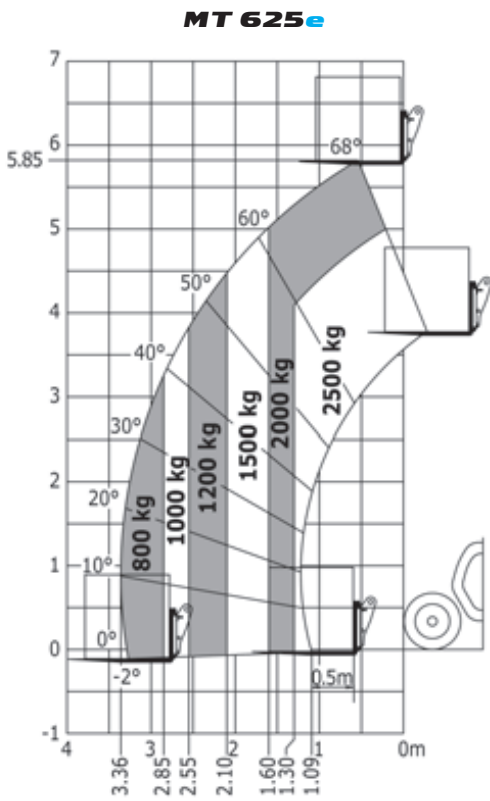
- **Seatbelt reminder**
This option alerts the operator when starting the machine, if the seatbelt is not properly fastened.
- **Machine charging alert**
Unable to start machine while charging!
- **Optimal visibility**
On the load and 360°.
- **Joystick with operator presence detection**
The JSM® presence detector prevents unwanted movements and ensures total safety for operators and their environment.
- **Automatic parking brake**
With hill-start assist.

SAFETY PACK

Optional device that assists and protect drivers, informing them in real time of any maneuver that may expose them to risk. It warns teams on site of inappropriate operator behavior and sends the information to the fleet manager. A simple tool for encouraging good habits!



Go to how-to videos
Reduce Risks helps you get the most out of your machine.



	MT 625e
Max. capacity (kg)	2500
Max. offset (m)	3.40
Max. lifting height (m)	5.85
Battery technology	Lithium-ion
Battery capacity std / opt (kWh)	35
Integrated charger power std / opt (kW)	3 / 9
Empty weight (with forks) (kg)	4800
Overall height (m)	1.92
Overall width (m)	1.81
Overall length (m)	3.83
Ground clearance (cm)	33
Outer turning radius (m)	3.31
Environmental noise (dB)	92
Noise level in driver's cab	72



Reduced transport costs

Optimal dimensions for safe loading and transportation.

SLINGING/ANCHORING

Clearly identified, accessible slinging and anchoring points at front and rear of the machine.

FOLDING FORKS

System to secure forks to the carriage to gain length. Safe road travel.

Incredibly compact

Thanks to its ultra-compact dimensions, your machine can easily pass through garage doors, into basements and work in tight spaces.



At your service

Focus on your business and leave the rest to us! Experience the smooth electric transition with Manitou.

- **Connected solution**
Stay connected to your compact telehandler: visualize its position in real time, anticipate maintenance and easily analyze its performance. And all on a PC, smartphone or tablet.
- **Financing**
Not sure whether to buy or lease? Several financing solutions are available. Ask your dealer for advice.
- **Extended warranty**
Focus on your core business, with a modular extended warranty.
- **Maintenance**
Take care of your Manitou with a maintenance contract. Delegate maintenance to specialists, and rest assured you will receive proactive, impeccable service. In the event of resale, you preserve its value over time.
- **Customization**
It's never too late to upgrade your Manitou with a wide range of retrofit options.



"As a business owner or manager, we have a duty to support the energy transition with our material handling equipment. Using zero-emission, low-noise machines is becoming essential, but so is not losing productivity. That's why we're looking for low-emission, versatile, high-performance machines!"

Your dealer



Scan to find more
information on
manitou.com



This publication presents the description of the versions and configuration possibilities Manitou products which may differ in equipment.

The equipment presented in this brochure may be standard, optional, or not available depending on the version. Manitou reserves the right, at any time and without notice to modify the specifications described and represented. The specifications given do not bind the manufacturer. For further details, contact your Manitou dealer. Non-contractual document. Presentation and visuals of non-contractual products. The logos and visual identity of the company are the property of Manitou and cannot be used without authorization.

All rights reserved. The photos and diagrams contained in this brochure are provided for consultation purposes and for information purposes only.

Manitou BF SA - Public limited company with a board of directors Share capital: 39,547,824 euros - 857,802,508 RCS Nantes - ©Manitou ©Adobe stock