

Range
MRT^e
VISION+
100% Electric



Scan and find out
more information
on manitou.com

 **MANITOU**
HANDLING YOUR WORLD



Discover your cabin

Scan the QR code
with your smartphone!

Rear
camera
standard

Operator comfort

You will never want to leave the cabin of your MRT-e VISION +

- **Quick to use**
Large, intuitive 12.1" touchscreen, which can also be operated via an additional navigation button. Also works with gloves!
- **Dynamic load charts on the display**
To monitor the position of the load in real time. On-board diagnostic system.

New MRT-e remote control

You can select the 3 desired power modes, the battery extender functions and also move your machine from the basket and from a distance! (optional)

- **Exceptional visibility**
The cab design gives you unrestricted visibility in all directions.
- **Pressurised cab**
The pressurised cab provides a healthy working environment and extra sound insulation.
- **Choose your environment**
Position the interchangeable "DSB" buttons as position you want on the 2 integrated armrests.
- **Electrically adjustable rear view mirrors (R/G)**
A great convenience that gives you optimal visibility at all times.

Keeping operators and their environment safe

Manitou is committed to designing machines that provide optimum safety for users.

- **Access on all 4 sides of the machine!**
Easier access to the undercarriage, regardless of the position of the turret, thanks to the new system of integrated access on all four sides of the machine.
- **A smart and safe machine**
Dual "capacitive" joysticks with integrated detection sensors for safe movement and reduced risks.
- **Determine your work area**
To secure your repetitive handling on congested sites and increase safety.
- **Load Condition Monitor (CEC)**
Continuously analyses the position of the load in the space and the working configuration of the machine. The system restricts the working area depending on the attachment and the load being handled.

360° night lighting

Available as an option, 360° lighting includes 5 headlights at the back of the machine for total visibility.

Simplified user's guide Videos

Reduce Risks helps you to the safe use of your machines



- **Locking of hydraulic functions**
Locking of the carriage tilt for safe handling and of all hydraulic functions, including stabilisers.
- **Automatic parking brake**
The standard automatic parking brake ensures safe manoeuvring on all terrains.

Manitou is committed to reducing your total cost of ownership (TCO)

Throughout the project, we take your total cost of ownership into account in order to develop high-performance, robust and cost-optimised machines.

OPERATOR TRAINING

Maximise safety, machine operation and productivity through operator training on your job site.

- Get the most out of your machine
- Improve job satisfaction
- Reduce unscheduled maintenance

Going electric? Learn how to optimise performance and energy efficiency:

- Energy optimisation
- Battery control
- Handling of attachments
- Charging solutions...

- **Energy regeneration system**
A system that regenerates energy when the accelerator pedal is released, resulting in lower consumption and greater autonomy.
- **Energy consumption**
All energy consumption information is visible in real time on the display and to the operator. Everything is under control!
- **Optimised resale value**
The MRT range gives you a high resale value thanks to its performance, quality and durability of its components.
- **Zero maintenance costs**
Lithium-ion batteries do not need care and maintenance.
- **LED work lights and road lights**
For improved brightness, longevity and reduced power consumption.



At your service

Focus on your core business and leave the rest to us! Experience the smooth transition to electric power with Manitou.

- **Connected solution**
Stay connected to your compact telescopic handler: view its position in real time, anticipate its maintenance and analyse its performance easily. All this on a PC, smartphone or tablet.
- **Financing**
Not sure whether to buy or lease? Several financing solutions are available, ask your dealer for advice.
- **Analyse performance**
View the performance of your machines in a graphical format that is easy to follow and interpret.
- **Extended warranty**
Concentrate on your core business, worry-free, with a modular warranty extension.
- **Maintenance**
Take care of your Manitou with a maintenance contract. Delegate maintenance to specialists, so you can be sure of a proactive and impeccable service. In the event of resale, you preserve its value over time.
- **Customisation**
It's never too late to upgrade your Manitou with a wide range of attachments, available as aftermarket items.

Max. working Height

from **22** to **26** m

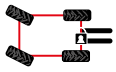
Max. Capacity

6000 kg

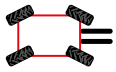
Max. Outreach

up to **21.7** m

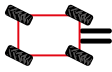
3 steering
modes



2 WHEEL
STEERING



4 WHEEL
STEERING



CRAB
MODE

Automatic
Wheel
Alignment

100% electric or hybrid?

Maximum versatility in the use of energy according to your working conditions. You have the option of adding an extra battery (in 100% electric mode) or a E-Xtra generator* (in hybrid mode). Your standard range up to 4 hours** can vary depending on your choice of option: up to 8 hours** with the additional battery or continuously with the E-Xtra generator.

*Heat engine that recharges the battery.

**Working autonomy depends on many factors: type of application, work cycle, weather, comfort options such as heating, ventilation, air conditioning and lighting, etc.

The cab with Easy Step and the large handles make getting in and out even easier



Quick installation

Install/remove the battery or E-Xtra generator is quick and easy.



Plug-in mode

The machine on stabilisers can also operate connected to the main electricity supply. You can enjoy an unlimited autonomy.

Unchanged performance.

All the advantages and versatility of an MRT in electric version. Ideal for work with environmental constraints (noise pollution, emissions, etc.), night work, in urban areas, historical centers, etc.



ULTRA PANORAMIC CABIN

The optional ultra panoramic cab offers full visibility (no roof rack) and meets ROPS/FOPS level 2 safety standards.



100%
Electric



Zéro
emission



Low
noise level



Lithium-ion batteries

This battery technology allows the opportunity charge (partial and frequent recharging of the battery). Not to mention its long lifespan and capacity, which are among the best.

Combined charging

Charging can be done with the on-board charger and the E-Xtra generator at the same time. A solution to reduce charging time!

Charging time

Several options are available. Equipped with an 11kW on-board charger (type 2 socket), a battery can be charged in 4h30m*. In 2h15* with the 22kW on-board charger. Using the on-board fast charger you reduce your charging time to less than 1 hour*. Source for the 400V AC and 230V AC.

* Charging time at 400 V AC for a SoC battery (state of charge) from 0 to 80%. The charging time also depends on other factors, such as temperature, battery condition, etc.

A tailor-made machine

To benefit from optimal performances according to your applications, you can set your power mode: ECO, STANDARD and BOOST.





3 in 1

One machine for 3 modes: telescopic / aerial platform / suspended load type

Manitou telescopic handlers are real tool carriers on which you can easily connect the attachment validated by Manitou and specifically adapted to your application.

Floating fork carriage

Unique, sleek design for unparalleled visibility and 30% less weight



Hydraulic winch

6T hydraulic winch. Improved speed compared to the previous generation.



Platform

Open/close in less than 50 seconds (up to 1000 kg, three people). Easy access with three entry points.



2-Hook Jib

Robust and simple solution for handling suspended loads. The crane is equipped with 2 hooks to adapt to your needs.



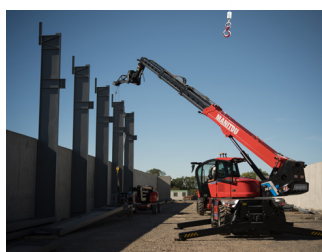
Winch jib

Gain in offset while transforming your MRT into a mobile crane with this jib-extension equipped with a hydraulic winch. Direct mounting of the hook for increased speed.



Aerial jib 2

Elevation of people solution allowing to work in positive (+9.3m) as well as in negative (-6.4m). 360° rotation of the arm. Capacity 200 kg including 2 people.



E-RECO
RECOGNITION CONTROL

The MRT range is equipped as standard with the E-RECO attachment recognition system. It detects and analyses the attachment to propose the corresponding work envelope and thus help you to optimise the machine's working parameters. .

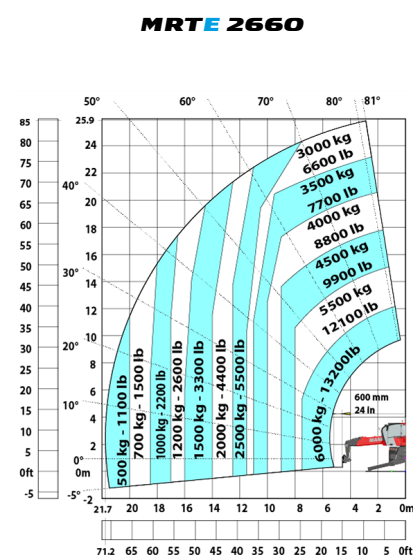
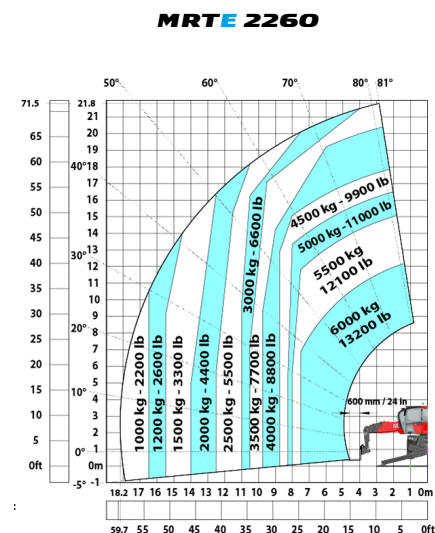
	MRTE 2260	MRTE 2660
Max. capacity	6000 kg	6000 kg
Max. lifting height	21.8 m	25.9 m
Max. outreach	18.2 m	21.7 m
Overall width	2.50 m	2.50 m
Overall height	3.1 m	3.1 m
Overall weight	18000 kg	18000 kg
Length to face of forks	6,97 m	8,08 m
External turning radius	4.46 m	4.46 m
Ground clearance	0.38 m	0.38 m
Frame levelling corrector +/-	7°	7°

Battery and charging

Nominal voltage	624 V	624 V
Max. voltage	700 V	700 V
Technology	Lithium	Lithium
Energy (1 battery)	65 kWh	65 kWh
Energy (option : 2 batteries)	130 kWh	130 kWh
On-board charger power/ current : 11kW / (AC)	11 kW (AC)	11 kW (AC)
Option : On-board charger power/ current : 22kW / (AC)	22 kW (AC)	22 kW (AC)
Option : On-board fast charger power / current: 22kW / (AC) - 60 kW (DC)	22 kW (AC) / 60 kW (DC)	22 kW (AC) / 60 kW (DC)

Option E-Xtra generator

Brand / norm	YANMAR EU Stage V / US EPA Tier 4	YANMAR EU Stage V / US EPA Tier 4
Maximum power @ rpm	18.4 kW / 25 Hp @ 2800	18.4 kW / 25 Hp @ 2800



A solution tailored to your needs

To discover the wide range of options available, speak with your Manitou representative.



Charging cable kit or portable fast charger

for either AC or DC charging, even if the battery is not onboard the MRT-e. An indispensable tool for fleet management.



Bio hydraulic oil

Easily biodegradable and non-toxic oil to reduce environmental impact.



Cameras

Boom head and side cameras are available to secure your manoeuvres on the construction site.



«With the constraints of noise and emissions on construction sites, the switch to electric is becoming essential. The electric MRT allows us to overcome these constraints while maintaining our productivity and efficiency.»

Your dealer



Scan and find out
more information
on **manitou.com**



This publication describes the versions and configuration possibilities of Manitou products which may differ in equipment. The equipment shown in this brochure may be standard, optional or not available depending on the version. Manitou reserves the right to change the specifications described and shown at any time without notice. The specifications shown are not binding on the manufacturer. For more details, contact your Manitou dealer. Non contractual document. The logos and visuals of the company are the property of Manitou and may not be used without permission. All rights reserved. The photos and diagrams contained in this brochure are provided for reference purposes only. Manitou BF

SA - Public limited company with a Board of Directors - Share capital: 39,547,824 euros - 857 802 508 RCS Nantes
Manitou ©Adobe stock